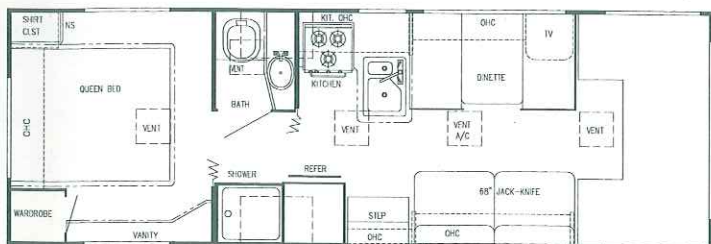


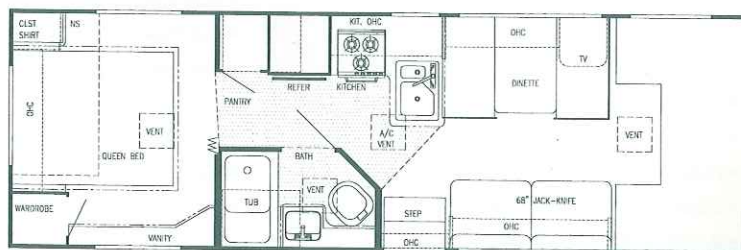


COUNTRY CLUB[®]

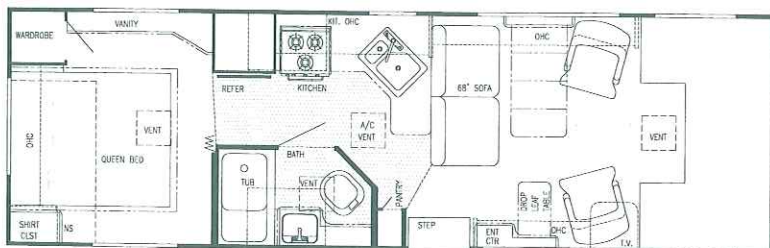
Class C



Model W6272 (Twin Beds or Bunks Opt.)



Model W6293 (Twin Beds or Bunks Opt.)



Model W6300 (Twin Beds or Bunks Opt.)



Model W6301 (Twin Beds or Bunks Opt.)



Model W6314 (Twin Beds or Bunks Opt.)



COUNTRY CLUB[®]

Class C

Interior and Decor

- 6' - 5" Interior Height
- Natural Oak Stile Constructed Cabinetry
- Natural Oak, Raised Panel Mortise and Tenon Cabinet Doors (in galley)
- Privacy Curtain Cab
- Interior Decorative Clock
- Queen Size Bed, Cab-Over
- 2-Way Driver & Passenger Seats
- Deluxe Carpet W/Pad Throughout
- Coordinated Bedspread & Shams
- Power Vent in Commode
- Generous Overhead Storage
- Mini Blinds in Kitchen
- Soft Touch Interior Ceiling Fabric
- Designer Interior Window Treatments
- Oak Drink Tray (Ford)
- Sink Cover
- Oak Knife Holder
- Slide Out Cabover Bunk
- Acrylic Entry Door Assist Handle

Electrical Systems

- Easy-Store 30' Elect. Power Cord
- Lighted Basement Storage
- Double Overhead Reading Lights
- 110V Receptacles
- Generator prep
- Ground Fault Circuit Interrupter
- Outside Receptacle
- Auxiliary Battery
- Electronic Converter w/Charger (45 Amp)
- AM/FM Cassette w/4 Speakers
- Monitor Panel

Exterior and Construction

- High Quality Clear Coated Paint on Skirt
- Welded Aluminum Cage Construction
- High Density Block Foam Insulation in the Walls, Roof & Floor
- Super-Slick Laminated Mende Board Fiberglass Exterior
- Radiused Laminated Rubber Roof w/ Heliarc-Welded Aluminum Rafters
- Exclusive Molded Roof Brick Insulation
- Tubular Steel Floor
- Laminated Floor w/Metal Underbelly
- Foamed, Sealed & Undercoated Subfloor
- Fiberglass Front and Rear Caps & Wings
- Full Basement Storage
- Carpeted Basement Storage Compartments
- Distinctive Exterior Graphics
- Expansive Radius Slider Windows
- Front Cab-Over Window
- Outside Grab Handle
- Porch Light
- Dead-Bolt on Entry Door
- Rubber Entry Step
- Spare Tire and Wheel
- Fully-Enclosed Black, Grey and Fresh Water Tanks

Bath and Water

- Demand Water System
- City Water Hook-Up
- Tub/Shower Combination
- Bath Convenience Accessories
- Lavatory w/Base Cabinet Storage
- Water Bypass Valve

Ford Chassis

- 6.8L, V-10 Engine
- E-40 Super Duty Chassis
- 4 Speed Auto. Overdrive Trans.
- Tilt Wheel Steering
- Power Brakes & Steering
- Deluxe Heated & Remote Mirrors (Opt.)
- Power Locks and Windows
- Radial Tires
- Dual Air Bags
- Cruise Control
- Gas Tank - Approx. 55 Gal.
- FORD Turbo Diesel Chassis (Opt., N/A 6293)

Appliances

- 3-Burner Range w/Oven
- Range Hood w/Monitor Panel
- Carbon Monoxide Detector
- Microwave
- 6 Gal. Quick-Recovery Water Heater
- 13,500 BTU Ducted Roof A/C
- 30,000 BTU Furnace (25M - 6272)

Popular Options

- Outside Entertainment Center
- Sliding Dual Battery Tray
- Battery Disconnects
- Heated and Remote Mirrors
- Cabover Entertainment Center (N/A 6293)
- CD Player
- Side Cabover Entertainment Center

MODEL	Chassis	Wheel Base	GVWR	*Length	*Height (w/A/C)	*Black	*Gray	*Fresh	LP Tank	*Basement Storage
W6272	Ford Super Duty V-10	186	14,050	28' - 1"	11' - 3"	46	39	47	62 lb.	95.3 cu. ft.
W6293	Ford S.D. V-10	208	14,050	29' - 3"	11' - 3"	39	39	39	62 lb.	111.4 cu. ft.
W6300	Ford S.D. V-10	208	14,050	30' - 3"	11' - 3"	39	39	47	62 lb.	107.3 cu. ft.
W6301	Ford S.D. V-10	208	14,050	30' - 6"	11' - 3"	46	39	47	62 lb.	107.3 cu. ft.
W6314	Ford S.D. V-10	208	14,050	30' - 9"	11' - 3"	46	39	39	62 lb.	t.b.a.

- Approximate, and subject to change without notice.

For further information, contact your local dealer or Yellowstone. Yellowstone reserves the right to make changes in prices, colors, materials, components and specifications and to discontinue models at any time without notice or obligation. Yellowstone assumes no responsibility for any error in type or print reproduction of specifications or floorplans in this brochure.

TP 5M 10/98

Printed in U.S.A.

For More Information:

Call 1-800-811-0302, ext. 3288



Yellowstone
 QUALITY RECREATIONAL VEHICLES
 26535 US 6 EAST, NAPPANEE IN 46550

