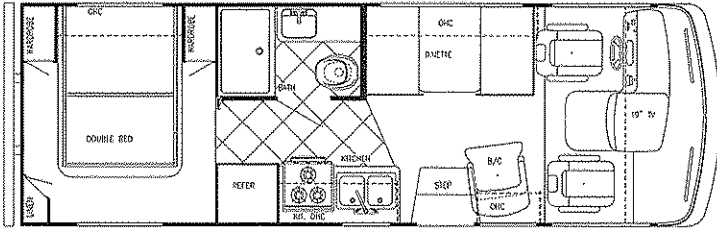




FLOORPLANS

Cavalier 2003

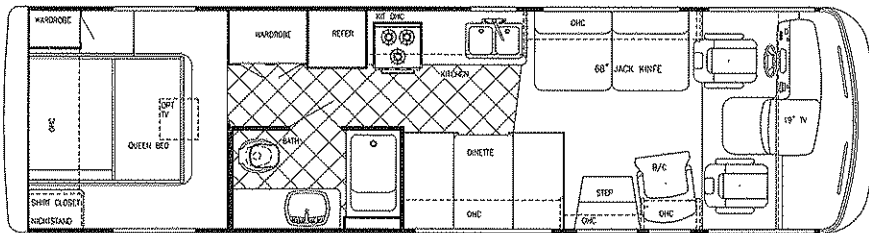
• RENTAL • CLASS A MOTORHOMES •



* Specifications on the 8240 are different than the 8314,8328 Floorplans.

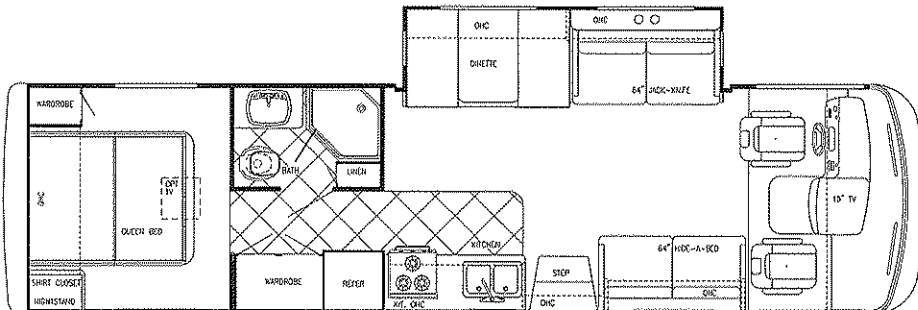
Chassis	Workhorse
Engine	V-8/8.1 I/Lt
GVWR	12,300
Wheelbase	158"
Ext. Length	25'-2"
Ext. Height w/AC	11'-6"
Ext. Width	96"
Int. Height	77"
Int. Width	91 1/4"
Fresh	32 gal.
Grey	38 gal.
Black	38 gal.
Water Heater w/DSI	6 gal.
LP Gas Tanks	48 lbs.
Fuel Tank (Gal.)	40 gal.
Furnace (BTU's)	25,000

Model 8240C



Chassis	Ford
Engine	V-10
GVWR	15,700
Wheelbase	190"
Ext. Length	32'-0"
Ext. Height w/AC	11'-11"
Ext. Width	101"
Int. Height	83 1/2"
Int. Width	96"
Fresh	59 gal.
Grey	50 gal.
Black	50 gal.
Water Heater w/DSI	6 gal.
LP Gas Tanks	85 lbs.
Fuel Tank (Gal.)	75 gal.
Furnace (BTU's)	35,000

Model 8314C



Chassis	Ford
Engine	V-10
GVWR	20,500
Wheelbase	208"
Ext. Length	33'-9"
Ext. Height w/AC	11'-11"
Ext. Width	101"
Int. Height	83 1/2"
Int. Width	96"
Fresh	59 gal.
Grey	50 gal.
Black	50 gal.
Water Heater w/DSI	6 gal.
LP Gas Tanks	85 lbs.
Fuel Tank (Gal.)	75 gal.
Furnace (BTU's)	35,000

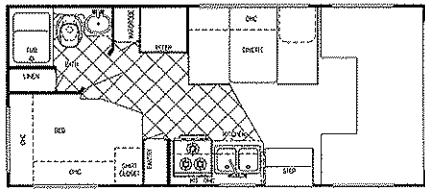
Model 8328C



FLOORPLANS

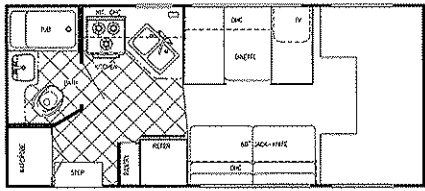
Cavalier 2003

• RENTAL • CLASS C MOTORHOMES •



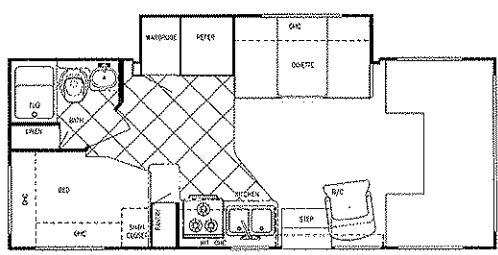
Model W6210C (Sofa Opt.)

Chassis	Ford V-10
Fuel	37 gal
GVWR	10,700
Length	22'-4"
Height	11'-1"
Width	10'1"
Black	30 gal
Grey	30 gal
Fresh	32 gal
LP Gas Tank	48 lbs.
Furnace	25,000 BTUs
Water Heater	6 gal



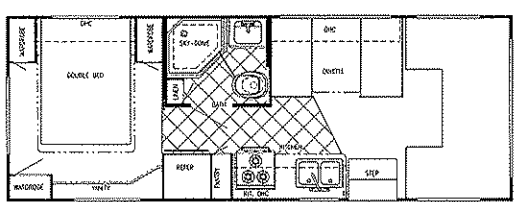
Model W6211C (Sofa Opt.)

Chassis	Ford V-10
Fuel	37 gal
GVWR	10,700
Length	22'-4"
Height	11'-1"
Width	10'1"
Black	30 gal
Grey	30 gal
Fresh	22 gal
LP Gas Tank	48 lbs.
Furnace	25,000 BTUs
Water Heater	6 gal



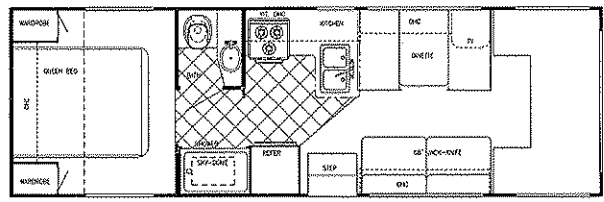
Model W6244C (Sofa Opt.)

Chassis	Ford V-10
Fuel	55 gal
GVWR	14,050
Length	24'-5"
Height	11'-1"
Width	10'1"
Black	30 gal
Grey	30 gal
Fresh	32 gal
LP Gas Tank	62 lbs.
Furnace	25,000 BTUs
Water Heater	6 gal



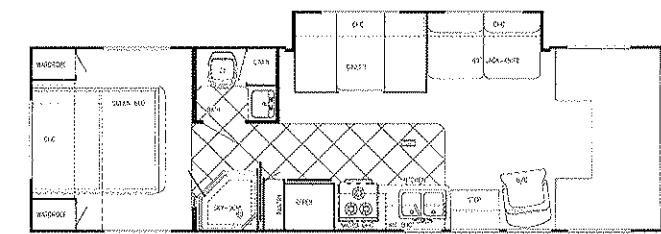
Model W6253C (Sofa Opt.)

Chassis	Ford V-10
Fuel	55 gal
GVWR	11,500
Length	25'-11"
Height	11'-1"
Width	10'1"
Black	36 gal
Grey	36 gal
Fresh	34 gal
LP Gas Tank	48 lbs.
Furnace	25,000 BTUs
Water Heater	6 gal



Model W6280C (Sofa Opt. Barrel Chairs Opt. Twin Beds or Bunks Opt.)

Chassis	Ford V-10
Fuel	55 gal
GVWR	14,050
Length	29'-3"
Height	11'-1"
Width	10'1"
Black	36 gal
Grey	36 gal
Fresh	34 gal
LP Gas Tank	48 lbs.
Furnace	25,000 BTUs
Water Heater	6 gal



Model W6316C (Twin Beds Opt.)

Chassis	Ford V-10
Fuel	55 gal
GVWR	14,050
Length	31'-7"
Height	11'-3"
Width	10'1"
Black	36 gal
Grey	36 gal
Fresh	34 gal
LP Gas Tank	48 lbs.
Furnace	25,000 BTUs
Water Heater	6 gal

Cavalier 2003



• CLASS A • STANDARD SPECIFICATIONS •

Interior & Decor

- Hardwood Cabinet Stiles and Doors
- Soft Touch Ceiling
- Self-Edged & Radius-Cornered Countertops
- Windshield Privacy Drape
- Designer Vinyl Cockpit Seats
- Aluminum Framed Furniture
- 3-Way Driver Seat
- Generous Overhead Storage
- 6' 11" Interior Ceiling Height
- Boarders in Kitchen & Bedroom

Exterior & Construction

- "Cradle of Strength" Construction:
 - Tubular Metal Cage Construction
 - Welded Steel Truss Sub-Floor System
- Vacuum-Bond Laminated Sidewalls
- Block Foam Insulation in Roof & Sidewalls
- Heated Holding Tanks
- Bus-Style Storage Doors
- Radius Entry Door
- Smooth Fiberglass Exterior
- Tinted Windows
- Galvanized Steel Exterior Storage
- Seamless Rubber Roof
- Automotive Style Caps - Front & Rear

*8240 Specifications are different than the 8314, 8328 Floorplans.

Bath & Water

- Demand Water System
- City Water Hook-Up
- Double Residential-Style Sink
- Shower Stall (8314)
- Marine Commode
- Gravity Drains on Fresh Water Lines
- Neo-Angle Shower w/Glass Surround (8328)

Electrical Systems

- On Dash Emergency Start
- Easy-Access Dual Battery System
- 12-Volt, 45-Amp Converter
- Electric Supply Cord
- Electric Overload Protection
- Automotive-Type, Color-Coded Wiring
- 12-Volt Battery Disconnect
- Converter w/Battery Charger
- Auto Start Switch

Deluxe Standard Features

- 19" Color TV w/Remote
- Microwave Oven
- 3-Burner High-Performance Range
- Lighted, Power Range Hood

- 2-Door, 2-Way Refrigerator
- TV Antenna w/Amp and Boost & 2 Jacks
- Hydraulic Leveling System (8328)
- AM/FM CD Stereo w/4 Speakers

Chassis

- Ford - Super Duty w/Triton V-10 Engine and 4-Speed Automatic Transmission
- GVWR - 15,700 (8314)
- GVWR - 20,500 (8328)
- Electronic Ignition
- Power Steering and Brakes
- High Capacity Automotive Heater & A/C w/R134 Environmental Refrigerant
- Tilt Steering Wheel
- Cruise Control

Popular Options

- Workhorse - 8.1Lt V-8 Engine
- Wheel Covers
- Exterior Painted & Dye Cut Graphics
- Bedroom 11,000 BTU Ducted A/C w/Selector Switch
- Back-Up Monitor
- Hydraulic Leveling System (8314)
- Exclusive Bedroom Ceiling Overhead TV
- Onan or Generic Generator

• CLASS C • STANDARD SPECIFICATIONS •

Interior & Decor

- 6'-8" Interior Height
- Stile Constructed Cabinetry
- Privacy Curtain Cab
- Deluxe Carpet w/Pad Throughout
- Generous Overhead Storage
- 2-Way Driver & Passenger Seat
- Coordinated Bedspreads & Shams
- Decorator Curtains & Shades w/Valances
- Queen Size Bed, Cab-Over
- Power Vent in Commode

Electrical Systems

- Easy Store 30' Elect. Power Cord
- Overhead Reading Lights
- 110-Volt Receptacles
- Ground Fault Circuit Interrupter
- Outside Receptacle
- TV Antenna w/Amp & Boost
- Auxiliary Battery
- Electronic Converter w/Charger (45 Amp)
- Generator Prep
- Battery Disconnect

Bath & Water

- Demand Water System
- City Water Hook-Up

- Tub Surround
- Lavatory w/Base Cabinet Storage
- Water Bypass Valve
- Glass Shower door (W6274, W6280)

Exterior & Construction

- Smooth Fiberglass Exterior
- Rear Ladder (Opt.)
- Chrome Bumper Cover
- Deluxe Awning (Opt.)
- Welded Aluminum Cage Const.
- 4-Ply Lam. Walls, Roof & Floor
- Laminated Rubber Roof w/Heliarc-Welded Aluminum Rafters
- Tubular Steel Floor
- Laminated Floor w/ Metal Underbelly
- Foamed, Sealed & Undercoated
- Generous Above-Floor Ext. Storage
- Generous Ext. Basement Storage
- Distinctive Exterior Graphics
- Expansive Radius Windows
- Hose Storage Bumper
- Front Cab-Over Window (Opt.)
- Outside Grab Handle
- Porch Light
- Dead Bolt on Entry door
- Spare Tire and Carrier
- Mag-Look Wheel Covers

- Aluminum Running Boards
- Rear Window (Opt)

Appliances

- 3-Burner Range Top
- Power Range Hood
- 2-Way Double Door Refrigerator
- Microwave
- 13,500 BTU Roof Air
- LP Leak Detector
- Carbon Monoxide Detector
- Monitor Panel

Popular Options

- Chevy 8.1 Ltr.s (6210, 6211, 6253, 6280)
- LP Gas Oven
- Emergency Start Switch

Ford Chassis

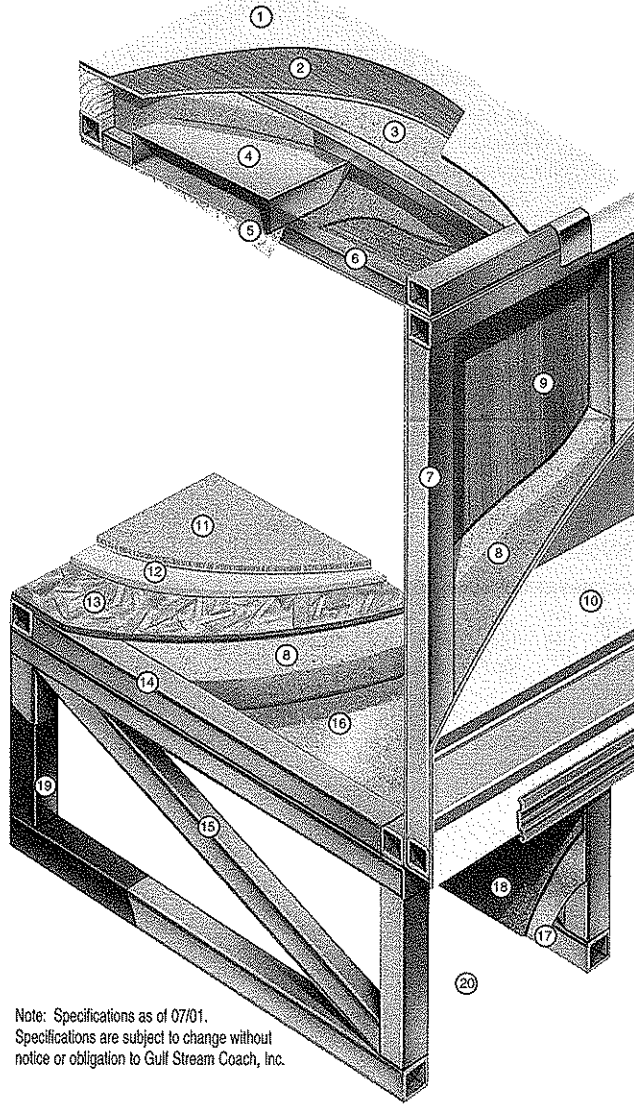
- 4 Speed Automatic Overdrive Transmission
- Tilt Wheel Steering
- CD Player-AM/FM Stereo w/4 Speakers
- Power Brakes & Steering
- Radial Tires
- Cruise Control

Cavalier 2003 GTH



• CRADLE OF STRENGTH • Take the Time to Compare

Motorhomes Built To Last



Note: Specifications as of 07/01.
Specifications are subject to change without
notice or obligation to Gulf Stream Coach, Inc.

1. Seamless Rubber Roof For Greater Energy Efficiency and Dependability.
2. Luan Decking for Additional Strength.
3. Molded, High Density EPS (Expanded PolyStyrene) Roof Brick Insulation - Provides Consistent Insulative Value As Well As Superior Dimensional Rigidity.
4. One-Piece Formed Aluminum Air Conditioning Duct, Completely Surrounded By EPS Insulation.
5. Bubble-Wrapped Foil Insulation Provides Superior Insulation and Helps Prevent Condensation.
6. Rugged Welded Tubular Aluminum Roof Framing.
7. Rugged Heavy-Gauge Tubular Aluminum, Fixture Welded to Form the Sidewall Framing.
8. High-Density EPS Insulation Provides Superior Laminating and Bonding Characteristics and Insures Greater Energy Efficiency.
9. Interior Wall Panels Securely Laminated to Sidewall Framing.
10. "Mende" Fiberglass Exterior Vacuum-bond Laminated to Sidewall Framing for Lasting Beauty and Durability. (Super Slick - Classic)
11. High-Quality Stain-Resistant Carpeting Available in Designer Coordinated Colors.

12. Extra-Thick Padding Under Carpet Provides Extra Comfort and Increases Carpet Durability.
13. Seamless Structurewood Floor Decking Laminated to Steel Floor Structure Assures a Quiet, Long-Lasting, Rigid Floor and comes with a 10-Year Warranty.
14. Heavy-Gauge Tubular Steel Framing, Fixture Welded for Extra Strength and Stability.
15. Heavy-Gauge Tubular Steel Framed, Fixture Welded Floor Truss System Provides the Strongest Class C Foundation in the Industry.
16. Seamless Layer of Galvanized Steel Securely Laminated to the Steel Floor Framing.
17. Galvanized Steel Used to Form Each Storage & Holding Compartment.
18. Durable All-Weather Carpeting Completes Each Accessible Storage Compartment, Providing Extra Protection for Luggage and Valuables.
19. Rust-Prohibitive Paint Coating Applied to All Steel Framing Assures Corrosion and Rust Protection.
20. The Industry's Strongest, Most Spacious Exterior Storage Compartments.



Post Office Box 1005 NAPPANEE, IN 46550
• YOUR DEALER •



VISIT
www.gulfstreamrv.com

FOR MORE DETAILED INFORMATION...
OR CALL 1-800-765-8787 EXT. 3288

* All weights and measures are approximate and subject to change without notice. For more information, contact your local dealer, www.gulfstreamRV.com or Gulf Stream Coach, Inc. Gulf Stream Coach, Inc. reserves the right to make changes in prices, colors, materials, components and specifications and to discontinue models at any time without notice or obligation. Gulf Stream Coach, Inc. assumes no responsibility for any error in type or print reproduction of specifications or floorplans in this brochure. Photographs may show equipment or items that are optional and are not included in the purchase price of each coach, fifth wheel or trailer. © Copyright 2001 Gulf Stream Coach, Inc. Nappanee, Indiana USA

07/01-SP-5k